

Mining with Nature – Net Gain!

Project leader

Sara Carlsén, Boliden Mineral AB

Partners

Boliden, LKAB, Heidelberg Materials, Zinkgruvan AB, Kaunis Iron, Nordkalk, Ecogain, SLU

Project duration

1 April 2023 – 1 September 2024



The Mining and minerals industry roadmap for increased biodiversity by 2030

Project 1

Project 2

Project 3

Mining with Nature

Vägen mot målet

Net Gain!

Implementation

2020

2025

2030

Mining with Nature roadmap launched

We are here!

Increased biodiversity in all regions where we operate or prospect





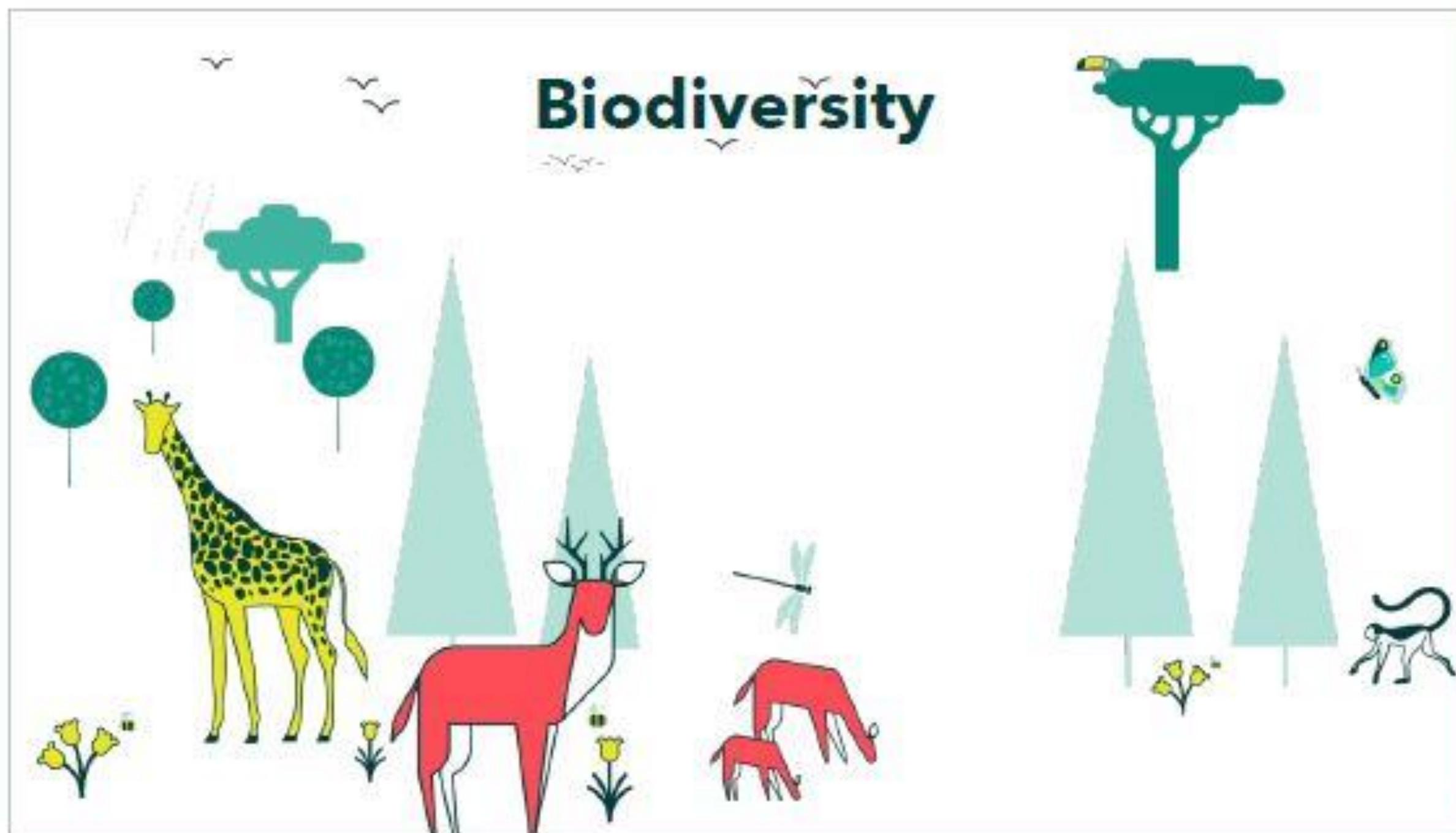
MINING WITH NATURE
The Swedish mining
and minerals industry's
road map for **biodiversity**
net gain

SveMin

**The Swedish mining and
minerals industry has set a
target to increase biodiversity in
all regions where we operate or
prospect by 2030**

From "Mining with Nature" Roadmap

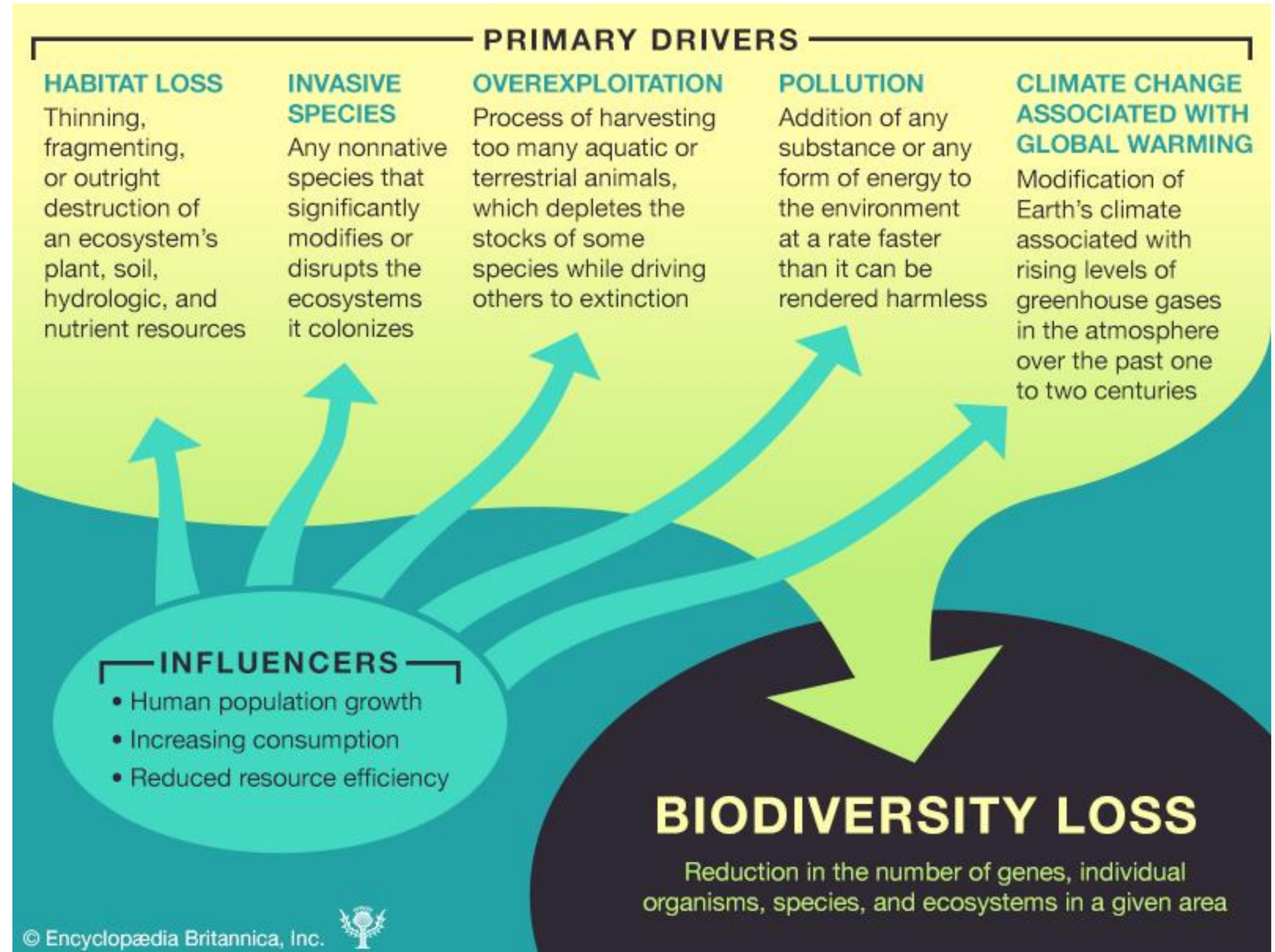




Biodiversity: The living components of the natural world, e.g. plants, animals, soil microbes etc.

Nature: Both the living and non-living components, e.g. biodiversity plus water, geology and the atmosphere

- 75 % of earth's surface heavily impacted by human activities (Ipbis 2019)
- Populations of mammals, birds, fish, reptiles and amphibians have declined by 70% since 1970 (Ipbis 2019)
- 1 million animal and plant species are threatened with extinction (around 10 % of species)



Mining's negative impact on nature

Single mine snapshot



A TYPICAL BASE METAL MINE (e.g. COPPER OR NICKEL) CAN GENERATE:



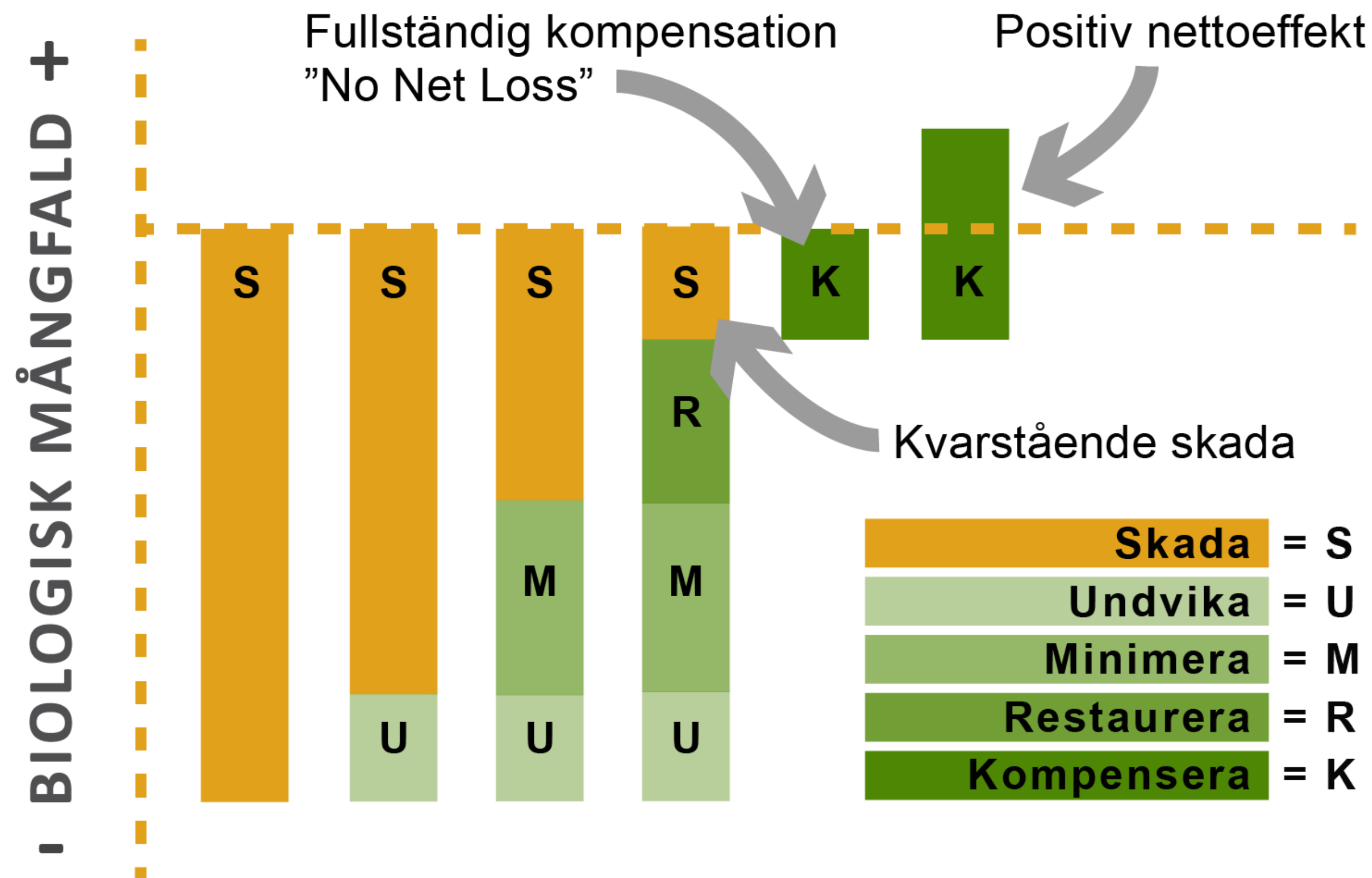
BENCHMARKED FROM TYPICAL COPPER AND NICKEL MINE IN 2022 – circa 10-12mta/a WITH AVERAGE HEADGRADES (e.g. 0.3 - 0.5%)

The mitigation hierarchy is an important part of the Mining with Nature roadmap

The more we can do in the earlier steps, the less we need to do in the next steps to achieve the industry goal of increased biodiversity.

The mitigation hierarchy consists of the following steps:

1. avoid,
2. minimize;
3. Restore and
4. Compensate



Mining with Nature – Net Gain



The overarching goal of “Mining with Nature – Net Gain!” is to ensure implementation of our roadmap among member companies through:

- Training and education among our employees to raise awareness and knowledge about biodiversity best practices
- Developing guidance documents and establishing best practices for the Mining industry
- Communication and networking, with an aim strengthen the social acceptance of mining industry and to inspire other industries to follow our example
- Critical review of the roadmap by SLU, to ensure planned actions will suffice to reach our target, and to otherwise suggest improvements
- Transparant reporting on our progress



Results so far

- Speaking and networking at numerous events
- Roundtable discussions with stakeholders at Almedalen
- Digital training platform – 200 employees invited for trainings
- Feedback from trainings has informed updates to training platform
- Long term administration of training platform secured
- Launch of Svemin biodiversity competition
- Guidance draft on materiality assessment
- Guidance draft on biodiversity risk analysis
- Workshop with prospecting companies
- Updates to reporting templates



In och nominera till Svemins Biodiversitetspris 2025!

Vilka bidrag kan du nominera?

Främjande åtgärd/er som har eller kommer att ha en långsiktigt positiv påverkan på biologisk mångfald. Åtgärder måste ha utförts av ett av Svemins medlemsföretag.

Till exempel:

- Gröngöra industriområden
- Skapa natur på nedlagda gruvor
- Höja naturvärden genom restaurering eller kompensation

Vinnaren presenteras på Svemins miljökonferens 2025

Anmälan är öppen!
Skicka in ditt bidrag senast **31 december 2024**
Läs mer på www.svemin.se/projekt-svemins-biodiversitetspris/

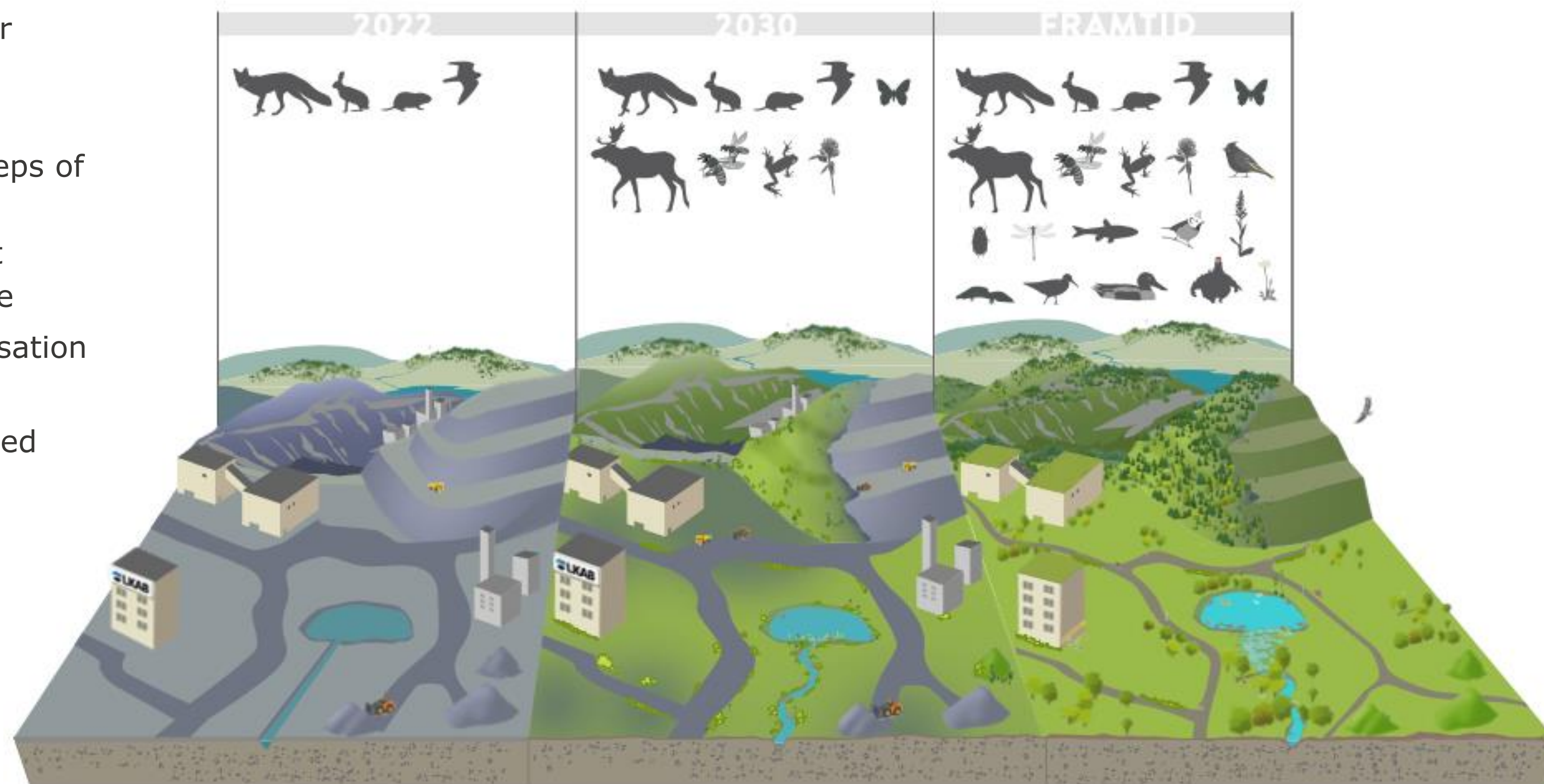
Upcoming activities and next step

- Guidance on ecological compensation
- First joint external reporting on progress for reporting year 2023
- Launch of updated digital training platform
- Templates for workshops and quiz to complement digital training in biodiversity
- Continued roundtable discussion with stakeholders
- Speaking and networking at several events during spring and summer
- Critical review of roadmap (SLU)
- Updates to roadmap following recommendations from SLU



Challenges

- Ensuring implementation in smaller companies
- Implementing and integrating the mitigation hierarchy through all steps of our operations: from business development and design to project managing and entrepreneurs on site
- Land access for ecological compensation
- Long term administration and coordination once project has ceased



Mining innovation for a sustainable future